

Coupled Pb Chains on Si(557): Origin of One-Dimensional Conductance

C. Tegenkamp,¹ T. Ohta,^{2,3} J.L. McChesney,^{2,4} H. Dil,³ E. Rotenberg,² H. Pfnür,¹ and K. Horn³

¹Institut für Festkörperphysik, Leibniz-Universität Hannover, 30167 Hannover, Germany

²MS 6-2100, Advanced Light Source, Lawrence Berkeley National Laboratory, Berkeley, California 94720, USA

³Fritz-Haber Institut der Max-Planck Gesellschaft, 14195 Berlin, Germany

⁴Montana State University, Bozeman, Montana 53706, USA

(Received 31 May 2007; published 22 February 2008)

The Pb/Si(557) system exhibits a strong anisotropy in conductance below 78 K, with the evolution of a characteristic chain structure. Here we show, using angle-resolved photoemission, that chain ordering results in complete Fermi-like nesting in the direction normal to the chains; in addition, the domain structure along the chains forms split-off valence bands with mesoscopic Fermi wavelengths which induce the 1D conductance without further instabilities at low temperatures.

DOI: 10.1103/PhysRevLett.100.076802

PACS numbers: 73.20.At, 68.65.-k, 73.21.-b, 73.25.+i

Confinement of electrons in low-dimensional structures induces intriguing transport phenomena and electronic properties. This scenario of strongly interacting electrons is described within the framework of a Luttinger liquid (LL) rather than by a Fermi liquid (FL) [1]. In an intuitive picture, this changeover is intimately related to the geometry of the structure; i.e., the interaction between electrons is enhanced in low-dimensional systems. An obvious strategy of making one-dimensional (1D) conductors is to use anisotropic solid state bulk materials like Bechgaard salts [2,3] or, as shown recently, $\text{Ca}_2\text{Ru}_2\text{O}_7$ [4,5]. Anisotropic adsorbate structures, realized on (vicinal) surfaces, are even more flexible, because the structure can be controlled on an atomic scale, and the electronic structure can be changed gradually by varying the degree of localization, e.g., by changing terrace widths. Submonolayer coverages of Ag and Au on vicinal Si(111) surfaces form chain structures showing indeed localized states perpendicular to the chain direction [6–8]. However, these weakly interacting systems often undergo instabilities, e.g., Peierls- or Mott-Hubbard driven phase transitions into insulating states at low temperature (see, e.g., [9]), and the 1D character of charge carriers is rarely established in transport measurements.

The Pb/Si(557) system is unique in this respect since macroscopic conductance measurements [10,11] reveal a slightly anisotropic temperature activated conductance above $T_c = 78$ K. Below this temperature the conductance switches reversibly to quasi-1D and metallic along the step direction, while in the perpendicular direction conductance is indistinguishable from the residual conductance of the substrate. In contrast to all systems exhibiting quasi-1D-conductance properties investigated so far, this system turns into a quasi-1D *metallic* conductance state at low temperatures with no indications of further instabilities.

This intriguing behavior requires an explanation in terms of the interplay of the geometric and electronic structure across the phase transition. Here using angle-resolved photoemission (ARPES), we demonstrate that

the interplay of the overlayer structure and the substrate leads to an electronically stabilized arrangement of chain structures and has direct consequences on the formation and filling of electronic bands that results in the observed transport properties. In particular, we demonstrate 1D conductance is a direct consequence of the *two-dimensional* interactions between the chains and the terraces thus avoiding to a large extent the instabilities of purely 1D systems.

As shown by scanning tunneling microscopy (STM) and detailed analysis of the data, the Pb-covered surface is restructured by an annealing process into large Pb-covered mini terraces with a width of $d = 1.55 \pm 0.05$ nm, forming a chainlike structure that is $4\frac{2}{3}$ Si chains wide and is separated by double steps of 0.314 nm height, i.e., the surface is refaceted into a (223) structure [12]. Below 78 K, the step structure is well ordered, and the chain structure along the terraces exhibits a tenfold superperiodicity [11]. Low energy electron diffraction (LEED) reveals that the local Pb-induced order corresponds to a

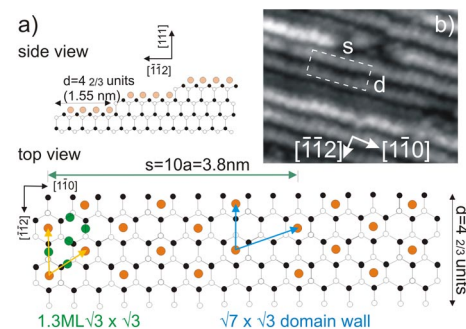


FIG. 1 (color online). (a) Top-view and side-view model of the wire structure with 1.3 ML of Pb obtained from STM and LEED measurements. The light gray (orange) circles denote Pb atoms on H3 positions. The full monolayer structure is shown only for the first $\sqrt{3} \times \sqrt{3}$ unit cell. (b) STM of the Pb wires ($T = 40$ K). The interchain distance d is found to be 1.5 ± 0.1 nm, whereas along the wire structure a tenfold periodicity $s = 3.8$ nm can be observed [11–13].

$\sqrt{3} \times \sqrt{3}R30^\circ$ structure, which is split due to the formation of regularly spaced domain walls yielding the tenfold superperiodicity [12,13]. Since a uniformly stepped surface with the (557) orientation would require 1.9 nm wide terraces, the narrower chainlike structures must be stabilized by Pb. A structural model of the ordered phase is shown in Fig. 1 together with a section of an STM image; the structural unit cell is marked by dashed lines. Both the superperiodicity and the long range order in the step-step distance are destroyed when going through the sharp and reversible first order phase transition above 78 K. In this Letter we demonstrate how the electronic structure in the vicinity of the Fermi level induces this behavior.

The Si(557) sample was cleaned in ultrahigh vacuum (base pressure 3×10^{-11} mbar) by the standard procedures described in Ref. [10]. The Pb monolayer (ML) was prepared by Pb evaporation at $T \leq 100$ K followed by annealing to 640 K for several minutes to ensure full multilayer desorption and rearrangement of the step structure. After preparation, the sample was transferred onto a He-cooled manipulator, and the resulting Pb structure was checked by LEED at temperatures around 40 K. For the layers measured in detail with ARPES we always saw the expected regular step structure described above, as well as the correct spot splitting of the diffuse $\sqrt{3} \times \sqrt{3}$ structure, indicating tenfold periodicity along the chains. ARPES measurements were carried out at beam line 7.0.1 at Advanced Light Source, using a computer-controlled setup for polar and azimuthal scans in k space. The photoelectrons were detected with a SCIENTA R4000 spectrometer. The angular acceptance was about 0.15° for each data point. The sample was oriented so that the polarization plane of the light was parallel to $[1\bar{1}0]$ direction. An optimal cross section for the Pb structures in spectroscopy was obtained for $h\nu = 160$ eV.

For the clean Si(557) the photoemission data of previous studies [14,15] were well reproduced. They are dominated by the features of the 7×7 reconstructed (111)-oriented mini terraces. The characteristic surface states and their strong intensity dependence as a function of momentum were used to calibrate the surface Brillouin zones (SBZ) with respect to the (111) unit cell. The valence band maximum, E_{VBM} for the clean substrate is around 0.65 eV below the Fermi energy E_F .

After preparation of the Pb chain structure, strongly modified surface states are formed by the interaction of the Pb monolayer with Si. Figures 2(a) and 2(b) show band dispersions taken along and perpendicular to the wires, respectively [cf. with dotted lines in Fig. 2(c)]. The bands near E_F are completely determined by the Pb modified surface states since E_{VBM} [see center of Fig. 2(a)] is still 0.2 eV below E_F . Therefore, electronic transport in these metallic chains is a pure surface property with charge depletion in the adjacent Si bulk material. These scans also clearly demonstrate the two-dimensional coupling in this system. The energy bands disperse in both directions

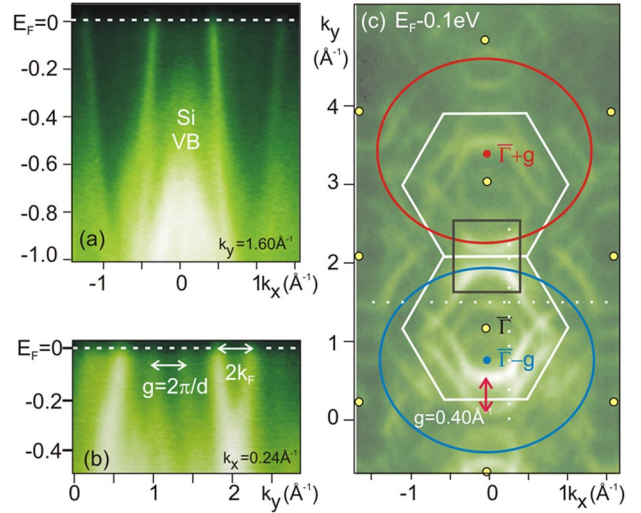


FIG. 2 (color online). (a), (b) Energy dispersion curves of the 1.3 ML Pb structure ($T_s = 40$ K, high intensity in white) in k_x and k_y directions along the dotted lines marked in (c). Here the DOS in the (k_x, k_y) plane, as measured by ARPES, is plotted at constant energy $E_F - 0.1$ eV. In (b), complete filling of the topmost band is demonstrated by the coincidence of the reciprocal lattice vector $g = \frac{2\pi}{d}$ (d is the interchain distance) with $2k_F$ at E_F . Further away from E_F , as shown in (c), a set of ellipses centered at the $\bar{\Gamma}$ points of the (111) terraces and at centers shifted by g describes most of the intensity distribution. Deviations leading to Fermi nesting are best visible within the square at the center (see Fig. 3).

so that 1D conductance properties are not obvious, but are due to a special structural and electronic coincidence, as explained below.

The intensity distribution in k space 0.1 eV below E_F , plotted in Fig. 2(c), has a free-electron-like character: it can be reconstructed by ellipses (rather than circles) around the $\bar{\Gamma}$ points of the (111) terraces and, in addition, by shifted replica along the $[\bar{1}\bar{1}2]$ direction ($[1\bar{1}0]$ and $[\bar{1}\bar{1}2]$ directions are called x and y directions, respectively, in what follows). The shift vector, g , corresponds exactly to the reciprocal lattice vector $g = \frac{2\pi}{d} = 0.40 \pm 0.01 \text{ \AA}^{-1}$, where $d = 1.55$ nm is the interchain distance. Such repeated structures also have been found for a variety of vicinal metallic surfaces [16,17]. For better orientation we marked the $\bar{\Gamma}$ points and the SBZ of the (111) surface in Fig. 2(c).

The fact that ellipses and not circles are found is readily explained by the influence of the terraces: the ratio of the principal axis is $a/b = 0.85$, which agrees with $a + g = b$, where $g = \frac{2\pi}{d}$. This anisotropy correlates qualitatively with the anisotropy found in conductivity above T_c [11]. The area of the ellipses is approximately 1.8 times the area of the first (111) SBZ, which is in reasonable agreement with the valence state of Pb, taking into account that the Pb(111) unit cell is compressed by 20% compared to Si(111) due to the mismatch.

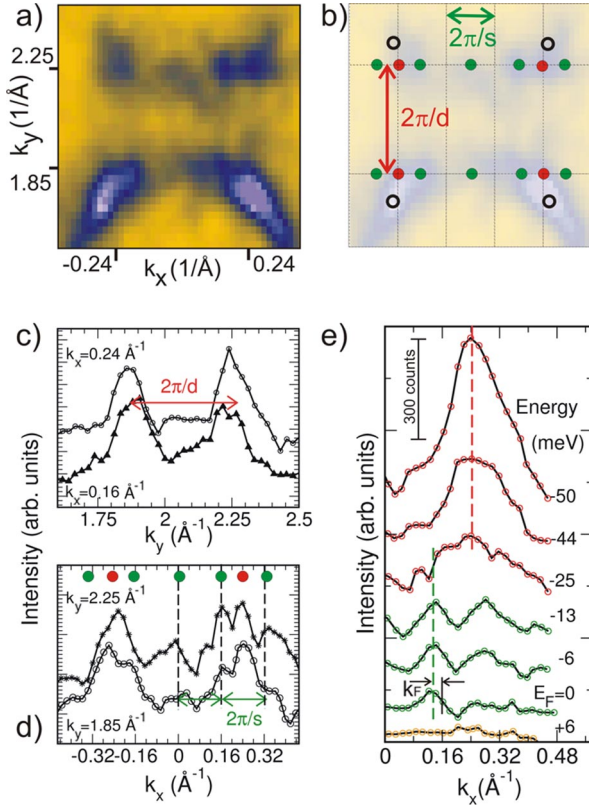


FIG. 3 (color online). (a) Constant energy plot, but at $E_F - 0.03$ eV, of the section marked by a square in Fig. 2(c) (low intensity in yellow). (b) Schematic drawing of the nesting points. The rectangles show the SBZ of the Pb-wire structure. (c), (d) Momentum distribution curves (MDCs) from (a) taken along k_y and k_x , respectively, reflecting the interchain distance d and the tenfold periodicity s . (e) Sequence of MDC curves along k_x at $k_y = 2.25 \text{ \AA}^{-1}$ at different energies around E_F . $T_s = 40$ K.

However, in order to explain the origin of 1D conductance in this 2D coupled system at low temperatures, deviations from the free-electron-like picture are necessary. This becomes visible only closer to E_F near the SBZ boundaries, as estimated from the phase transition temperature of 78 K. Indeed, such deviations become obvious at $E_F - 0.03$ eV: in Fig. 3(a) we plotted the section of Fig. 2(c) marked by a square, where the complete Fermi surface can be observed due to Umklapp scattering by $+g$ and $-g$. This is accompanied by high intensities, which is important, since the photoemission process is dominated by the local atomic environment, and long range order is reflected only by intensity modulations. In order to facilitate interpretation, the SBZ grid was superimposed onto Fig. 3(a), as shown in Fig. 3(b). It was determined from the geometrical structure found in STM and (independent) LEED measurements (see Fig. 1 and [12]) with the unit vectors g and $f = 2\pi/s = 0.16 \text{ \AA}^{-1}$ (with the tenfold periodicity s) in the $[\bar{1}\bar{1}2]$ and $[1\bar{1}0]$ directions, respectively. As origin we took the central $\bar{\Gamma}_{1\times 1}$ point without further shifts.

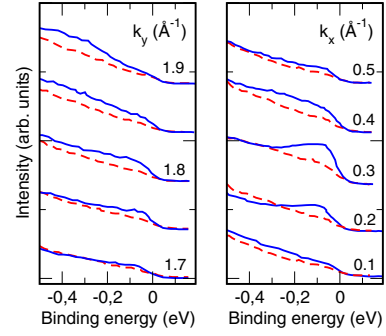


FIG. 4 (color online). Energy distribution curves taken along k_y at $k_x = 0 \text{ \AA}^{-1}$ (left) and along k_x at $k_y = 1.8 \text{ \AA}^{-1}$, respectively, below [$T_s = 40$ K, solid (blue) line] and above the phase transition [$T_s = 100$ K, dashed (red) line].

As shown in Fig. 3(a), the Fermi surface is no longer free-electron-like, but consists of only a few points in k space aligned along lines of constant k_y instead of sections of ellipses. The intensity close to the open circles of Fig. 3(b) is the result of an intersection of three ellipses, i.e., does not contain information of long range order and is therefore not considered here. The separation between these lines corresponds to exactly the reciprocal lattice vector g , and the intensity is concentrated at the zone boundary in the k_y direction, i.e., the Fermi surface is nested. This fact is emphasized even more clearly by looking at the MDC taken at $k_x = 0.24 \text{ \AA}^{-1}$ shown in Fig. 3(c). A corresponding energy band is shown in Fig. 2(b) along k_y . All three plots demonstrate that the Fermi wave vector in $[\bar{1}\bar{1}2]$ direction fulfills the condition $2k_F = g$. I.e., the uppermost band is completely filled for this direction and a standing wave is formed. In terms of transport, this induces insulating behavior.

Although an opening of a fundamental gap at E_F is not expected for a system with quasi one-dimensional conductance, the signature of nesting is manifested by a concentration of DOS at those k points just described, as exemplarily demonstrated by the EDCs in Fig. 4, which is extended over a few tenths of an eV away from E_F at temperatures below the phase transition. Above T_c , this enhancement at E_F has vanished, i.e., the intensity distribution becomes more uniform in k space (data sets drawn in red in Fig. 4). As will be argued below, this effect is induced by structural changes and causes the switching in conductivity.

We now analyze the Fermi surface in more detail in order to determine the nesting conditions effective in this system. This is done by plotting the intensity as a function of k_x at constant energy $E_F - 0.03$ eV and constant k_y , which fulfill the $2k_F = g$ condition, i.e., $k_y = 1.85 \text{ \AA}^{-1}$ and $k_y = 2.25 \text{ \AA}^{-1}$ in Fig. 3(d), and at different energies around E_F in Fig. 3(e). Two characteristic periodic intensity distributions were found in such plots: in addition to the intensity marked by the red circles, which is concen-

trated in the corners of the SBZ defined by the modulation along the wires (cf. Fig. 1 and [12]) a phase shifted modulation, again with the period $f = 2\pi/s = 0.16 \text{ \AA}^{-1}$, close to the center of the SBZ, is seen. The tenfold periodicity along the chains obviously leads to the formation of a doublet of split bands of the parabolae in k_x direction.

The peaks marked by red circles are at the SBZ boundary in both directions. Following the arguments from above, this part of the split band must be exactly filled in both directions and a band gap should be visible for this part. This is what we see indeed in Fig. 3(e). Here intensity plots along the k_x direction at $k_y = 2.25 \text{ \AA}^{-1}$ are shown at energies between $E_F - 0.05 \text{ eV}$ and E_F . Starting around 50 meV below E_F , the intensity at $k_x = 0.24 \text{ \AA}^{-1}$, marked by red circles in Fig. 3(b) and 3(d), decreases gradually and vanishes completely at E_F . In contrast, the satellite peaks (green circles), which appear in Fig. 3(e) around $k_x = 0.16 \text{ \AA}^{-1}$, have a finite intensity at E_F , i.e., these bands cross the Fermi level and are the only ones that contribute to electron transport in the $[1\bar{1}0]$ direction.

The remarkable insensitivity of dc conductance to atomic defects in the Pb chains found in experiment [11] can be explained by the extremely long Fermi wavelength of the conducting band found here. Taking the SBZ with the tenfold periodicity, as done in Fig. 3(b), it turns out that the peaks marked by the green dots are close to the $\bar{\Gamma}$ points, i.e., the Fermi wavelength of these states is above 20 nm [cf. Fig. 3(e)]. Therefore, the electrons scatter only weakly at defects of atomic size in this ordered state, in agreement with the experimental findings [11].

While the origin of this band splitting close to E_F still remains to be clarified (it may be induced directly by the domain structure of the tenfold modulated structure), we can estimate the gap size for the insulating band from Fig. 3(e) to be around 20 meV. Since this band has the dominant intensity compared with the conducting band, the formation of this band gap close to E_F effectively lowers the total energy of the ordered structure. Therefore, the terrace structure with its particular terrace width as sketched in Fig. 1 appears to be stabilized laterally by an effect with a strong electronic component, similar to the vertical stabilization of so-called magic heights of Pb islands on Si(111) [18,19]. Moreover, the gap size of 20 meV is of the expected order of magnitude for a critical ordering temperature of 78 K.

Increasing the substrate temperature above $T_c = 78 \text{ K}$, a structural first order phase transition with abrupt changes in conductance has been found [11]. At T_c , the dc conductance switches into a 2D regime, where transport is activated in both directions. A recent detailed structural analysis of this phase transition carried out by our group [20] revealed that this phase transition is commensurate-incommensurate coupled with increasing disorder in the system. Both the change in periodicity and the disorder cause removal of the nesting condition in the $[\bar{1}\bar{1}2]$ direc-

tion and thus a breakdown of the band filling rule in this direction. This is clearly seen in Fig. 4. The EDC curves at 100 K, shown are just examples, demonstrate a more or less uniform distribution of the DOS close to E_F in k space. Correspondingly, the Pb chains become two-dimensionally conducting above T_c , as observed [10,11]. The repeated zone structures are still visible in ARPES (not shown), but with the slightly smaller g vectors, as also found in our structural studies [20].

Summarizing, we have shown by ARPES that monolayer stripes of Pb on Si(557) are two-dimensionally coupled. However, Pb induces periodic self-organization of the terrace structure below 78 K that deviates from the macroscopic orientation and may in part be electronically stabilized. As seen here, this process results in two-dimensional nesting conditions at the Fermi surface with exact band filling in the $[\bar{1}\bar{1}2]$ direction normal to the step structure. In the direction along the chains, a doublet of bands is found at E_F , with only one of them conducting. The long superperiodicity along the chains causes a quasisubmicroscopic Fermi wavelength. Since these conditions are stabilized by a 2D mechanism, no further instabilities are expected at low temperature, and the material remains an almost ideal conductor.

We thank A. Bostwick for experimental support and fruitful discussions. This work is supported by the DFG, by the Max Planck Society and the ESF (T. O., K. H.), and by DOE and Department of Defense EPSCoR grants (J. L. M.). A. L. S. is supported by the Director, Office of Science, Office of Basic Energy Sciences, of the DOE (No. DE-AC02-05CH11231).

-
- [1] J. Voit, Rep. Prog. Phys. **58**, 977 (1995).
 - [2] S. Roth and C. Caroll, *One-Dimensional Metals* (Wiley-VCH, Weinheim, 2004).
 - [3] R. Claessen *et al.*, Phys. Rev. Lett. **88**, 096402 (2002).
 - [4] F. Baumberger *et al.*, Phys. Rev. Lett. **96**, 107601 (2006).
 - [5] E. Ohmichi *et al.*, Phys. Rev. B **70**, 104414 (2004).
 - [6] J.R. Ahn *et al.*, Phys. Rev. Lett. **91**, 196403 (2003).
 - [7] J.N. Crain *et al.*, Phys. Rev. Lett. **90**, 176805 (2003).
 - [8] J.N. Crain and F.J. Himpsel, Appl. Phys. A **82**, 431 (2006).
 - [9] J.R. Ahn *et al.*, Phys. Rev. Lett. **93**, 106401 (2004).
 - [10] C. Tegenkamp *et al.*, Phys. Rev. Lett. **95**, 176804 (2005).
 - [11] C. Tegenkamp *et al.*, Eur. Phys. J. B **43**, 557 (2005).
 - [12] M. Czubanowski *et al.*, New J. Phys. **9**, 338 (2007).
 - [13] C. Tegenkamp and H. Pfnür, Surf. Sci. **601**, 2641 (2007).
 - [14] R. Losio *et al.*, Phys. Rev. B **61**, 10 845 (2000).
 - [15] J.E. Northrup, Phys. Rev. Lett. **57**, 154 (1986).
 - [16] A. Mugarza and J.E. Ortega, J. Phys. Condens. Matter **15**, S3281 (2003).
 - [17] J.E. Ortega *et al.*, New J. Phys. **7**, 101 (2005).
 - [18] G. Wang *et al.*, Surf. Sci. **551**, 151 (2004).
 - [19] K. Budde *et al.*, Phys. Rev. B **61**, R10602 (2000).
 - [20] M. Czubanowski and C. Tegenkamp *et al.* (unpublished).